

PLANS
1/4" = 1'-0"

ENGULGED AREA

AREA 1 = [(19.83)(33.17)] - [(11.83)(4)(4) + (3.5)(3)] = 608.9 SF

AREA 2 = (6.93)(15.25) = 105.6 SF

AREA 3 = (20.45)(15.33) - (5.91)(4.17) = 270.5 SF

AREA 4 = (20.45)(15.33) = 313.6 SF

AREA 5 = SAME AS 2 = 105.6 SF

AREA 6 = " " = 105.6 SF

AREA 7 = SAME AS 1 = 608.9 SF

AREA 8 = " " = 608.9 SF

AREA 9 = (36.33)(77.83) = 2818.5 SF

AREA 10 = SAME AS 9 = 2818.5 SF

BALCONIES →

AREA G = TO R = (12)(11.83)(4.0) = 568 S.F.

STAIRS & GALLERIES →

AREA A = (9.7)(8.3) = 80.5 SF

AREA B = SAME AS A = 80.5 SF

AREA C = [(60)(33.25) + (9.91)(6.3)(4) + (3.3)(3.3)(4)] - [(52)(15.25)] = 819 SF

AREA D = SAME AS C = 819 SF

AREA E = (9.7)(8.3) = 80.5 SF

AREA F = [(60)(33.25) + (5.3)(5.3)(4) + (12.25)(3.4) + (5.5)(4)(7)] - [(6.33)(5.35)] = 1437.5 SF

AREA F = (18)(77.83) = 1401 SF

COVERED AREAS →

AREA E = [(60)(33.25) + (5.3)(5.3)(4) + (12.25)(3.4) + (5.5)(4)(7)] - [(6.33)(5.35)] = 1437.5 SF

AREA F = (18)(77.83) = 1401 SF

SCHEDULE OF OPENINGS

MARK	SIZE	TYPE
1	3'-0" x 6'-8" x 1 1/2"	FLUSH WOOD S.C.
2	2'-6" x 6'-8" x 1 1/2"	" " H.C.
3	6'-0" x 6'-8" x 1 1/2"	S.G. D.
4	2'-0" x 5'-8" x 1 1/2"	FLUSH WOOD H.C.
5	1'-4" x 6'-8" x 1 1/2"	" " H.C.
6	2'-0" x 6'-8" x 1 1/2"	BI-FOLD FLUSH WOOD
7	PR-3'-0" x 6'-8" x 1 1/2"	BI-FOLD FULL LOUVE
8	3'-0" x 6'-8" x 1 1/2"	FLUSH WOOD FULL LOUVE

WINDOWS

MARK	TYPE
A	5'-0" x 4'-0" ALL-GLASS H.S.
B	5'-0" x 2'-0" FROSTED GLASS H.S.
C	1'-0" x 2'-0" FROSTED GLASS H.S.
D	2'-6" x 3'-0" " " " "
E	6'-0" x 4'-0" " " " "

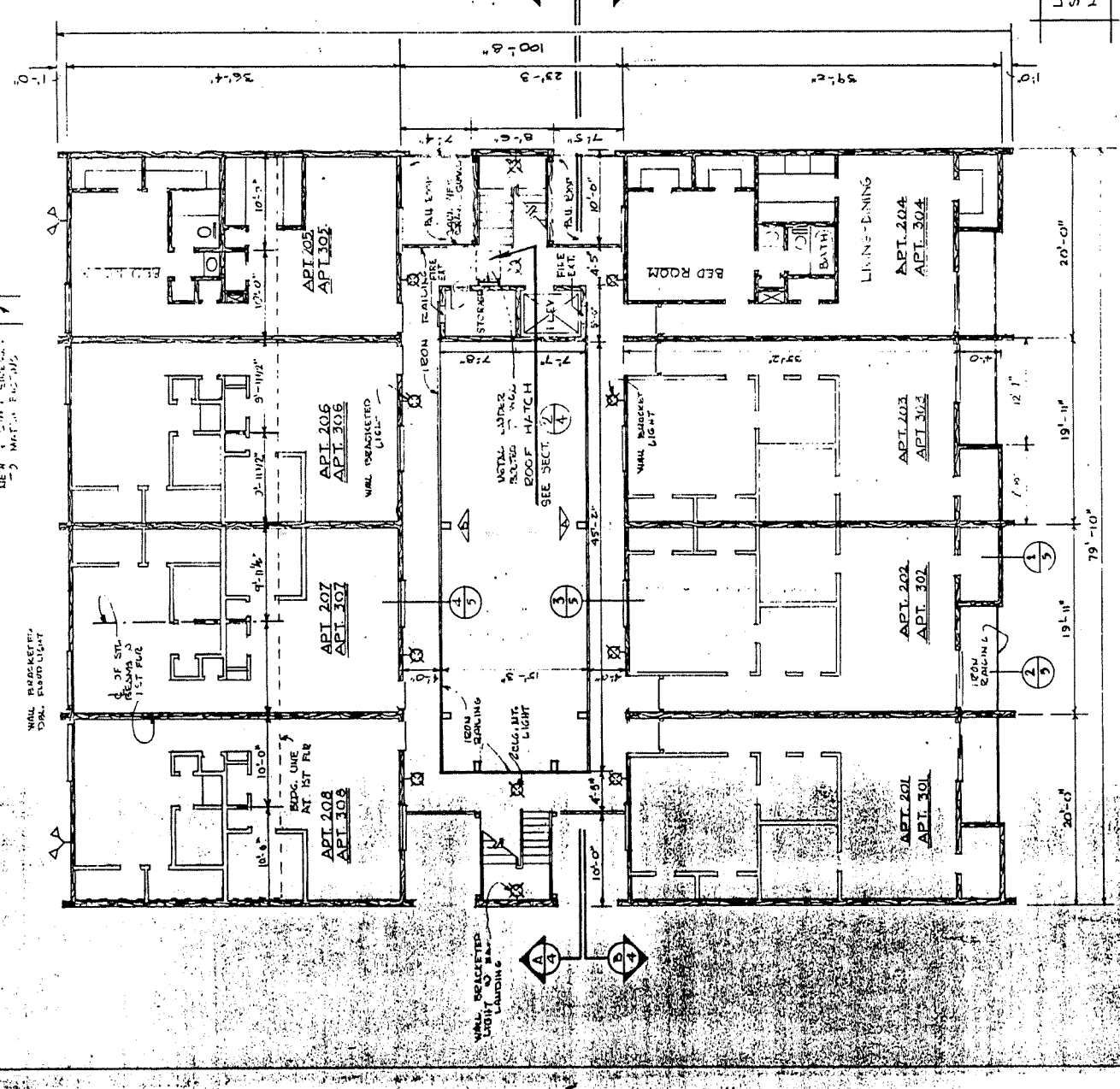
FINISH SCHEDULE

ROOM	FLOOR	BASE	WALL
LIVING	CARPET	WOOD	SYR. BD.
BED	"	"	"
KITCHEN	VIN. ASS.	"	"
BATH	CERAMIC TILE	"	"
HALL	CARPET	"	"
OFFICE	"	"	"
LAUNDRY	FIN. CONC.	"	"
STORAGE	"	"	"
POWDER	CARPET	"	"

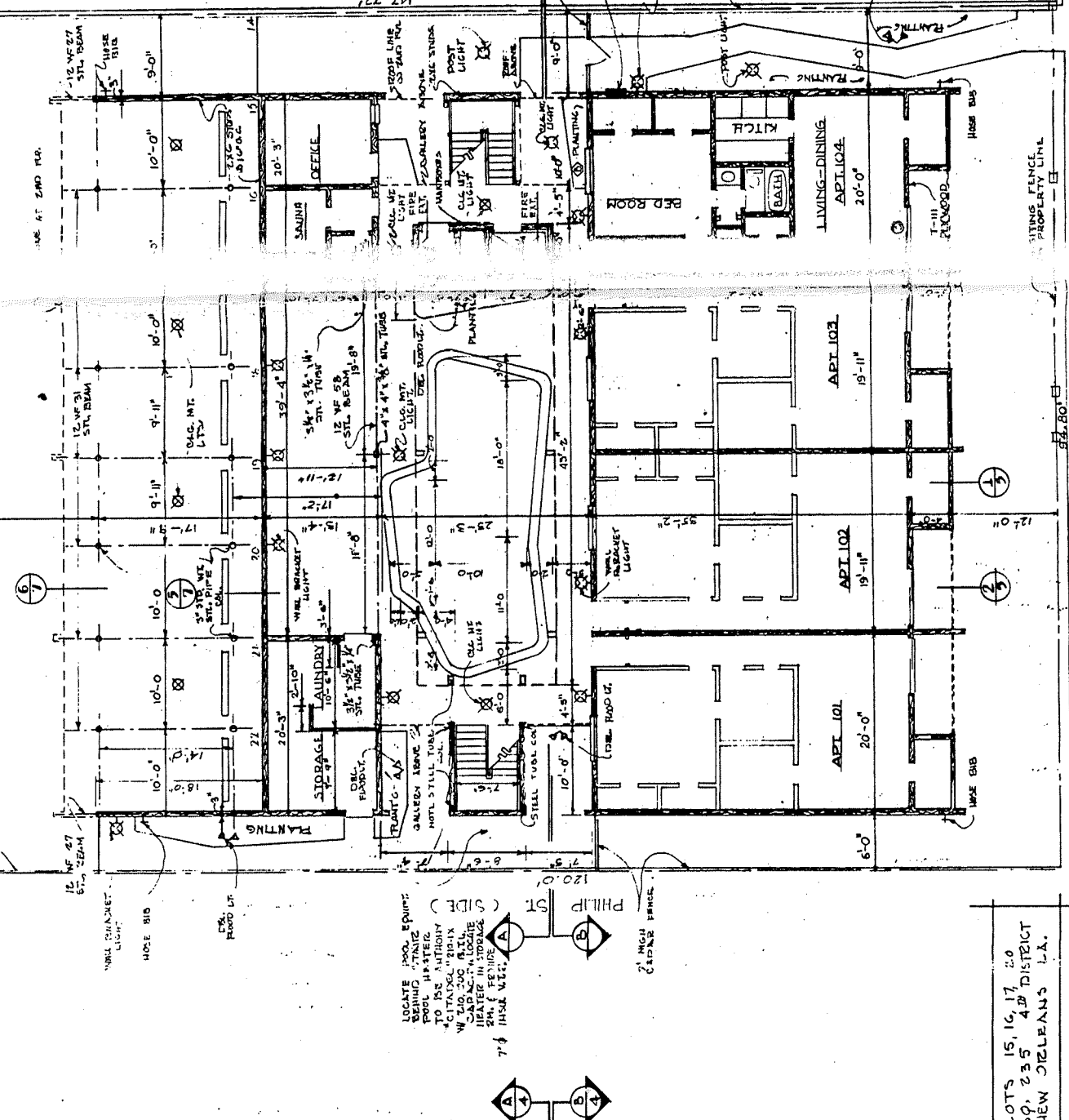
REMARKS

5'-6" WAINSCOT ABD. TUB

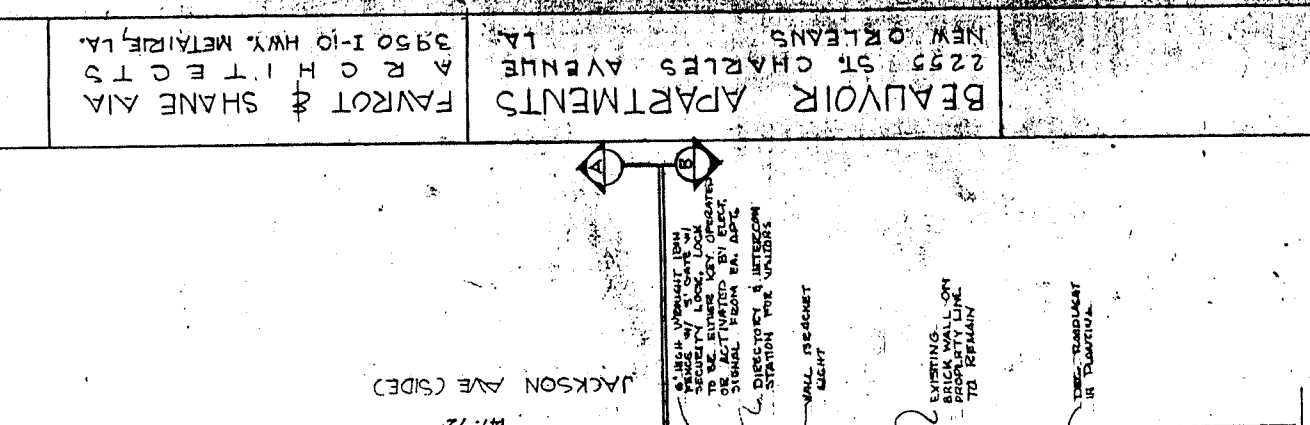
ENCLOSURE AREA
 BALCONIES 50 FT.
 GALLERIES, STAIRS, COVERED PARKING = 5,137 SQ. FT.
 TOTAL BLDG. AREA = 20,473 SQ. FT.
 20 CARS
 20



SECOND FLOOR PLAN (THIRD FLOOR SAME)
 SCALE 1/8" = 1'-0"



FIRST FLOOR PLAN
 SCALE 1/8" = 1'-0"



BEAUVOIR APARTMENTS
 2255 ST CHARLES AVENUE
 NEW ORLEANS LA
 FAVOROT & SHANE AIA
 ARCHITECTS
 3950 I-10 HWY. METAIRIE, LA

DATE: JUL 19 73
 REVISIONS:
 APR 73
 LARSON
 REMOVE STAIR WELLS