



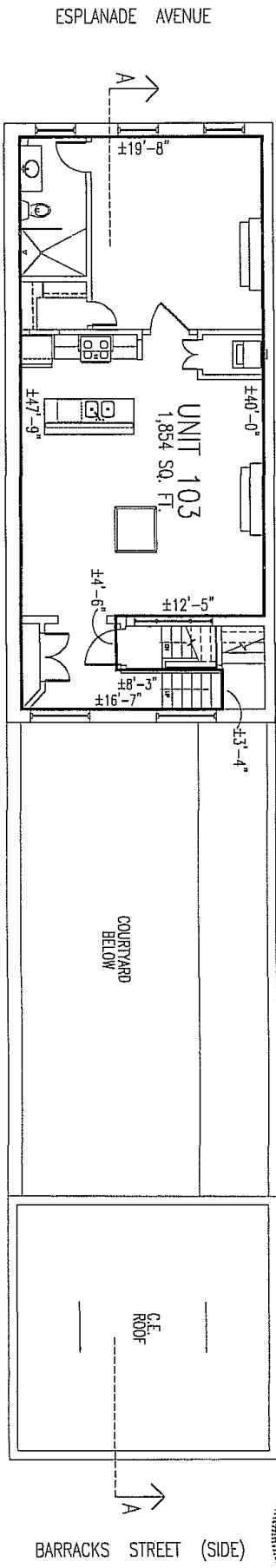
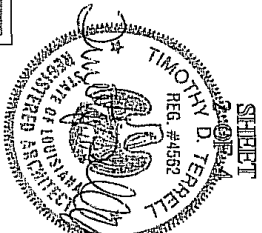
**604 ESPLANADE AVE.  
CONDOMINIUMS  
NEW ORLEANS,  
LOUISIANA**  
1-18-17

**SQUARE FOOTAGE SYNOPSIS**

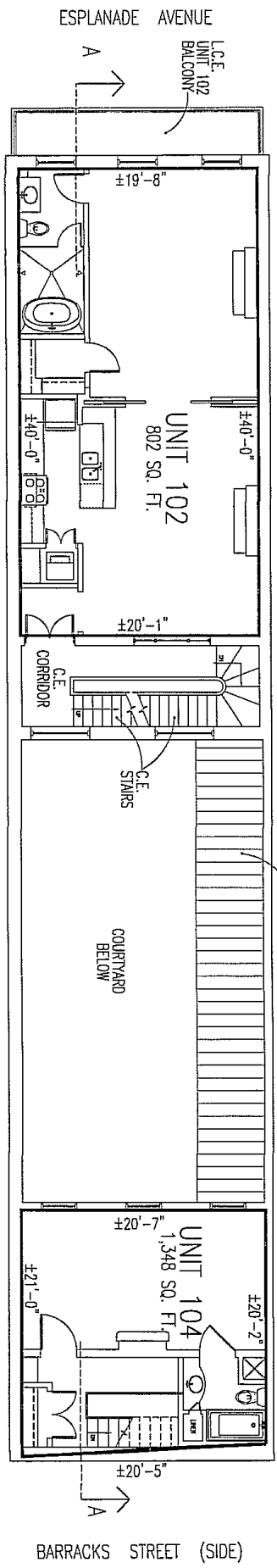
UNIT	FOOTAGE
UNIT 101	770 SQ.FT.
UNIT 102	802 SQ.FT.
UNIT 103	1,854 SQ.FT.
UNIT 104	1,348 SQ.FT.

**SQUARE FOOTAGE DISCLOSURE NOTE:**  
SQUARE FOOTAGE IS CALCULATED AS FOLLOWS:  
- INSIDE FACE OF ALL WALLS

THESE PLANS HAVE BEEN PREPARED BY OR UNDER MY CLOSE SUPERVISION TO THE BEST OF MY INFORMATION, KNOWLEDGE, AND BELIEF, IN MY PROFESSIONAL OPINION THEY COMPLY WITH THE STATE REQUIREMENTS IN THIS MATTER. I AM NOT PROVIDING ANY GUARANTEE OR WARRANTY OF ANY KIND, AND I AM NOT PROVIDING ANY PROFESSIONAL SERVICE IN CONNECTION WITH THESE PLANS. I AM NOT PROVIDING ANY PROFESSIONAL SERVICE IN CONNECTION WITH THESE PLANS. I AM NOT PROVIDING ANY PROFESSIONAL SERVICE IN CONNECTION WITH THESE PLANS.



**THIRD FLOOR PLAN**  
SCALE: 3/32" = 1'-0"



**SECOND FLOOR PLAN**  
SCALE: 3/32" = 1'-0"

**604 ESPLANADE AVE.  
CONDOMINIUMS  
NEW ORLEANS,  
LOUISIANA**

**SQUARE FOOTAGE SYNOPSIS**

UNIT	FOOTAGE
UNIT 101	770 SQ. FT.
UNIT 102	802 SQ. FT.
UNIT 103	1,854 SQ. FT.
UNIT 104	1,348 SQ. FT.

**SQUARE FOOTAGE DISCLOSURE NOTE:**  
 SQUARE FOOTAGE IS CALCULATED AS FOLLOWS:  
 - INSIDE FACE OF ALL WALLS  
 THESE PLANS HAVE BEEN PREPARED BY OR UNDER MY CLOSE SUPERVISION TO THE BEST OF MY INFORMATION, KNOWLEDGE, AND BELIEF IN MY PROFESSIONAL OPINION THEY COMPLY WITH THE STATE REQUIREMENTS UNDER THE LOUISIANA CONDOMINIUM ACT LA RS 9:122.1 TO DETERMINE THE CONDOMINIUM PLANS, DIMENSIONS INDICATED ON THESE DRAWINGS WERE DETERMINED FROM FIELD MEASUREMENTS IN CONJUNCTION WITH INFORMATION FROM CONSTRUCTION DOCUMENTS AND THEREFORE SHOULD AND ARE CONSIDERED CERTIFIED DIMENSIONS BUT INSIDE APPROXIMATE BUILDING DIMENSIONS.

SHEET  
3 OF 4

