

1141 Margaret Place - Sublease

1141 Margaret Place, New Orleans, LA 70130



Listing ID: 30173685
Status: Active
Property Type: Retail-Commercial For Lease
Retail-Commercial Type: Free-Standing Building
Contiguous Space: 5,341 SF
Total Available: 5,341 SF
Lease Rate: \$6,600 (Monthly)
Unit Price: \$14.83 PSF (Annual)
Base Monthly Rent: \$6,600
Lease Type: Gross Lease



Overview/Comments

1141 Margaret Place is a beautiful historic Lower Garden District building with a total building area of approximately 5,341 square feet. There is a nicely appointed two-story gallery and rear exterior courtyard. The interior details includes numerous traditional historic design and architectural detail including exposed brick walls, beautiful trim work, mantels, and a grand interior stairwell. The building is well positioned to accommodate a number of potential uses granted by the current zoning. The roof was replaced 7 years ago, and some electrical has been updated. Please reference the pictures for interior condition perspective.

More Information Online

<http://www.lacdb.com/listing/30173685>



QR Code

Scan this image with your mobile device:

General Information

Tax ID/APN:	41142913	Gross Building Area:	5,341 SF
Retail-Commercial Type:	Free-Standing Building	Usable Size (USF):	5,341 SF
Zoning:	HU-MU, HISTORIC URBAN NEIGHBORHOOD MIXED USE	Land Area:	3,096 SF

Available Space

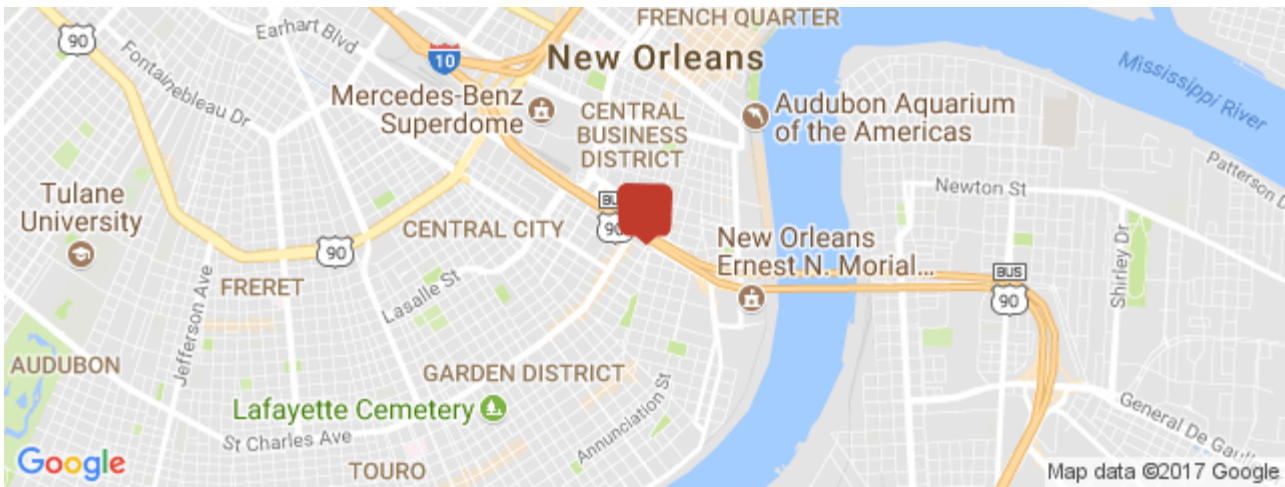
Suite/Unit Number:	100	Date Available:	10/16/2017
Space Available:	5,341 SF	Lease Rate:	\$6,600 (Monthly)
Minimum Divisible:	5,341 SF	Lease Type:	Gross Lease
Maximum Contiguous:	5,341 SF	Parking Spaces:	0
Space Type:	Sublet		

Building Related

Passenger Elevators: 0
Freight Elevators: 0

Location

Address:	1141 Margaret Place, New Orleans, LA 70130	MSA:	New Orleans-Metairie
County:	Orleans	Submarket:	Uptown-Garden District



Property Images



002_1600x1067_mls



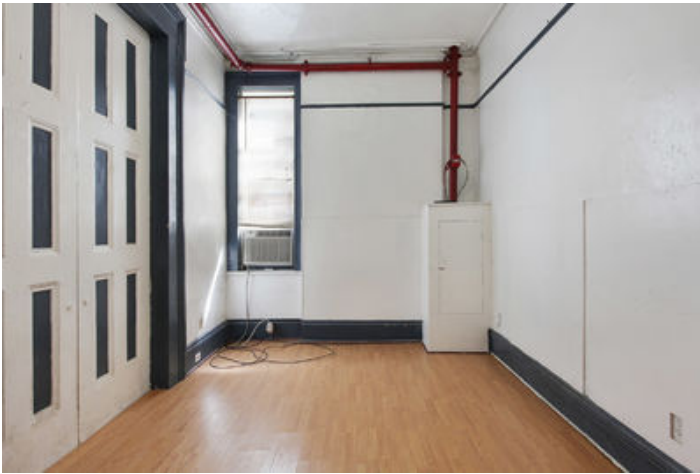
004_1600x1067_mls



003_1600x1067_mls



005_1600x1067_mls



006_1600x1067_mls



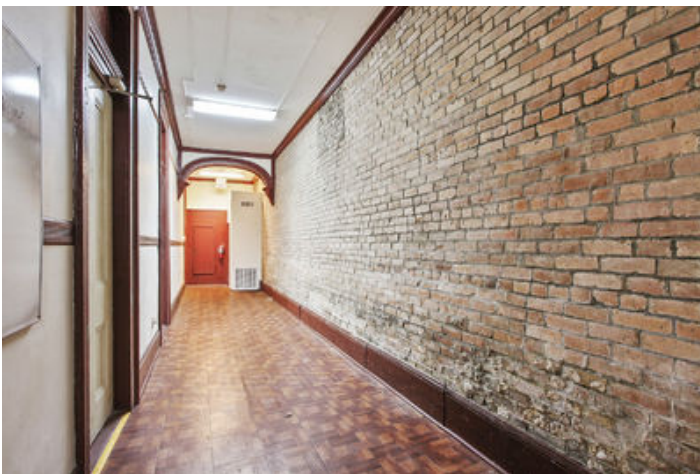
009_1600x1067_mls



007_1600x1067_mls



010_1600x1067_mls



008_1600x1067_mls



011_1600x1067_mls



012_1600x1067_mls



014_1600x1067_mls



013_1600x1067_mls



015_1600x1067_mls

Property Contacts



S. Parkerson (Parke) McEnergy

The McEnergy Company
504-274-2701 [0]
parke@mceneryco.com



Pat Browne III

The McEnergy Company Inc
504-274-2701 [0]
pat@mceneryco.com