



# 633 W PINHOOK ROAD

DEVELOPMENT SITE FOR SALE OR FOR LEASE



THE  
**MCENERY**  
COMPANY

810 UNION STREET, NEW ORLEANS, LA 70112  
504-274-2701 | [MCENERYCO.COM](http://MCENERYCO.COM)



# OFFERING OVERVIEW

LIST PRICE: \$18PSF OR 5,000/MONTH

**Ping Address:** 633 West Pinhook Road, Lafayette, LA 70503

**Site Dimensions:** 278' on East side of Pinhook Road & 167' on North side of Mall Street

**Approximate Area:** 46,529 Square Foot Development Site (Survey Available Upon Request)

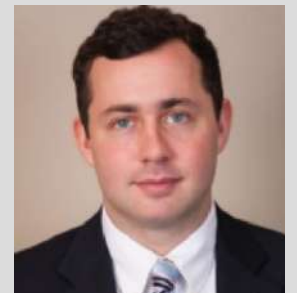
**Zoning:** CH, Commerical Heavy District

The "CH" district implements the Commercial/Office future land use category of Plan-Lafayette. The district allows compact development patterns, but provides flexibility for front parking, loading, and building design features for heavy commercial or service-orientated uses (such as large format retailers, auto dealerships, and repair services). Plan-Lafayette provides that the Commercial Office future land use category is principally a pedestrian oriented area. This District should only be used for locations where these uses currently exist, or where a rezoning applicant demonstrates that there is unmet market demand for the use.

RAMI KHODR  
D:504.274.2718  
C 504.214.7775  
EMAIL: RAMI@MCENERYCO.COM



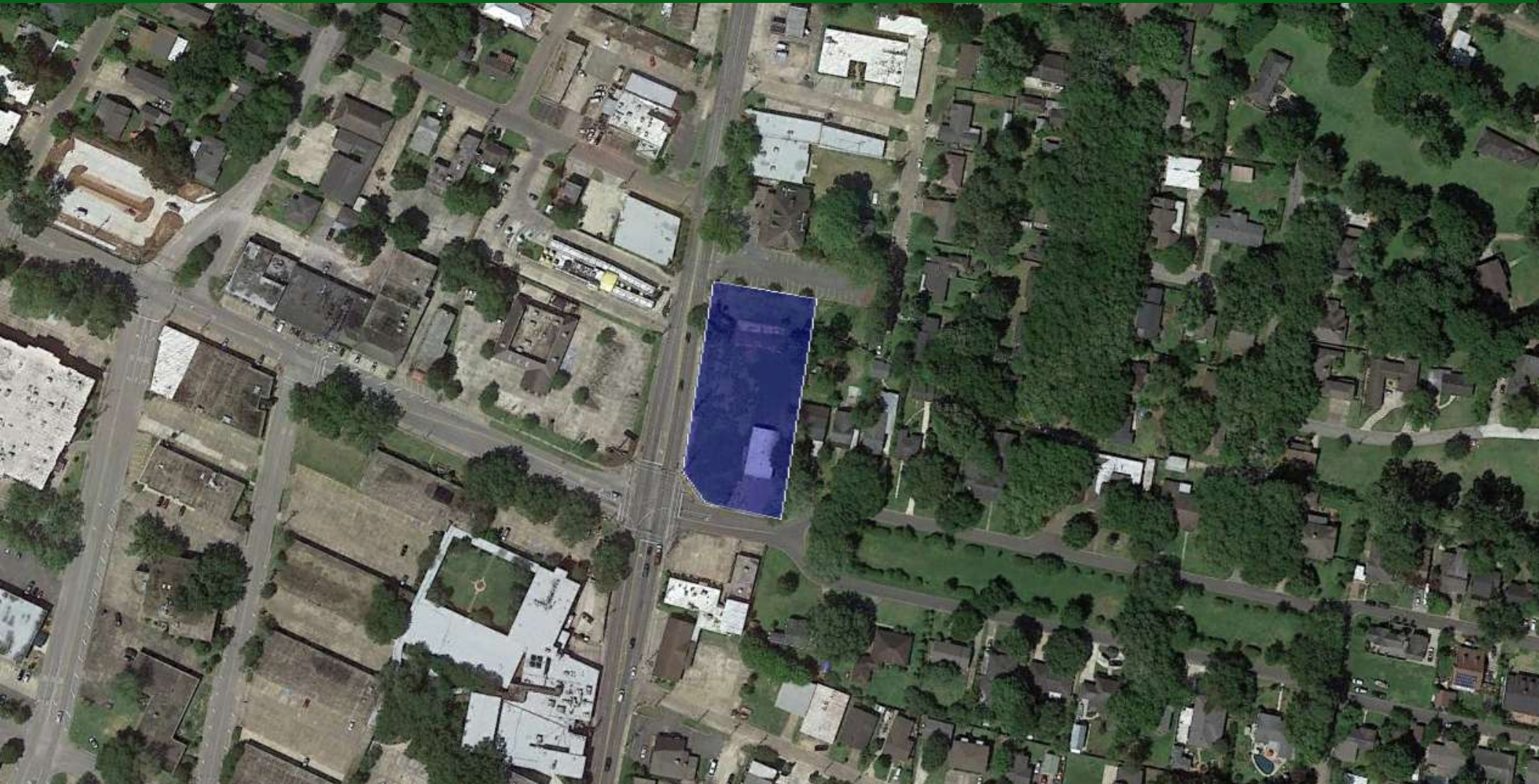
SEPH BABINGTON  
D:504.274.2668  
C 504.352.5234  
EMAIL: SEPH@MCENERYCO.COM







# SITE PHOTOS



THE  
**MCENERY**  
COMPANY

810 UNION STREET, NEW ORLEANS, LA 70112  
504-274-2701 | [MCENERYCO.COM](http://MCENERYCO.COM)





# SITE PHOTOS



THE  
**MCENERY**  
COMPANY

810 UNION STREET, NEW ORLEANS, LA 70112  
504-274-2701 | [MCENERYCO.COM](http://MCENERYCO.COM)





# SITE PHOTOS



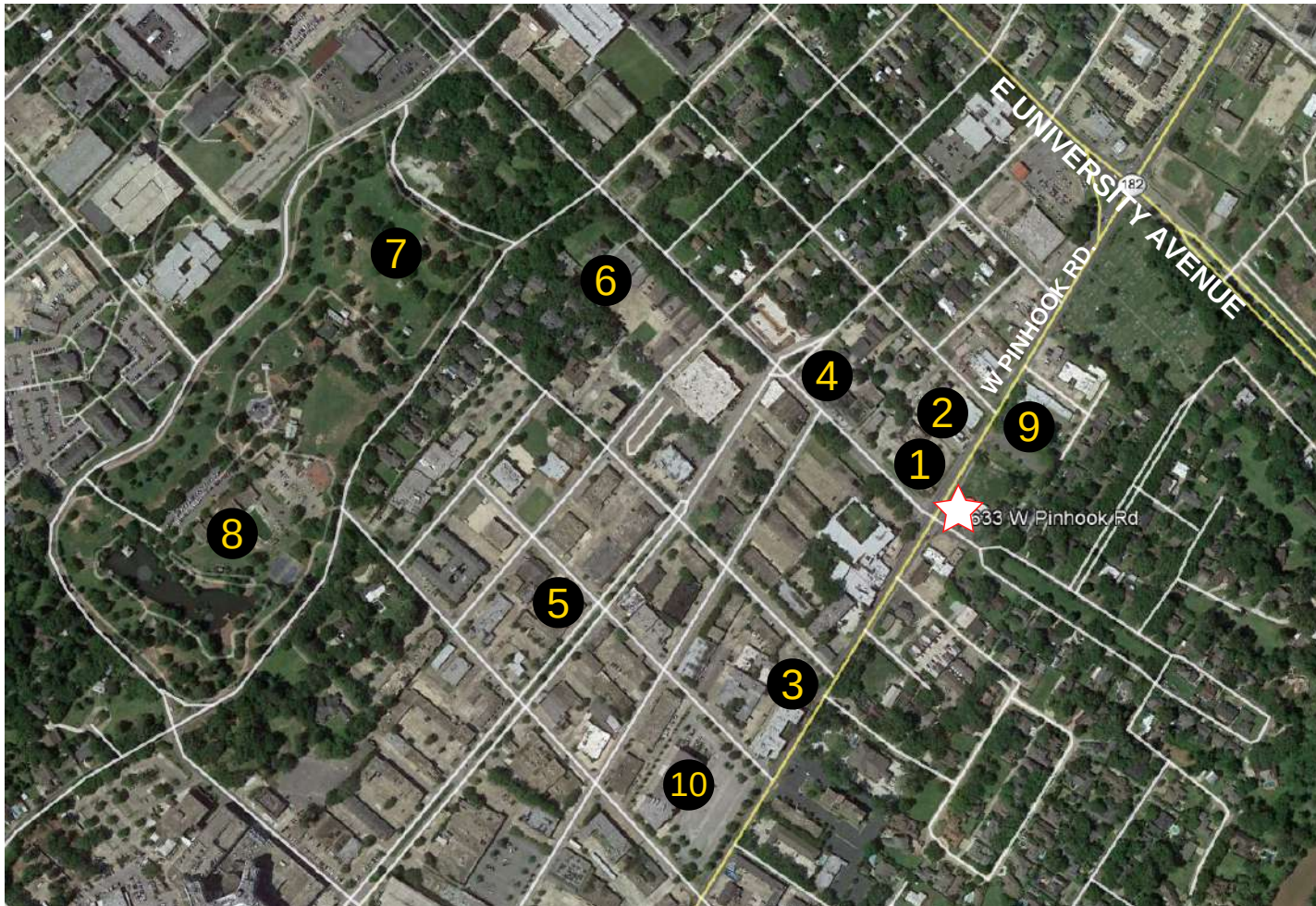
THE  
**MCENERY**  
COMPANY

810 UNION STREET, NEW ORLEANS, LA 70112  
504-274-2701 | [MCENERYCO.COM](http://MCENERYCO.COM)





# POINTS OF INTEREST MAP



- 1 RUTH CHRIS' STEAK HOUSE
- 2 SONIC DRIVE-IN
- 3 CHASE BANK
- 4 CAFE COTTAGE
- 5 ROLY POLY SANDWICHES
- 6 HILLARD ART MUSEUM
- 7 GIRARD PARK PENTANQUE COURTS
- 8 GIRARD PARK REC. CENTER
- 9 MOUTON'S BAR
- 10 LAFAYETTE GENERAL SURGICAL HOSPITAL