

**LARGE-SCALE MEDICAL / OFFICE FACILITY ~ 16,516 SF of GBA**  
**2237 Poydras Street, New Orleans, Louisiana 70119 - BIG PARKING!**  
**AVAILABLE | Purchase or Lease Options Considered**

**Priced to Lease at \$25.00 per SF NNN**  
**OPPORTUNITY ZONE ASSET!**



**M2 BROKERAGE**  
**& THE MCENERY COMPANY**



The McEnery Company | Office: 504.274.2701 | 810 Union Street, 4th Floor, New Orleans, LA 70112

M2 Brokerage New Orleans | Office: 504.267.9405 | 1854 Cedardale Avenue, Baton Rouge, LA 70808

S. Parkerson McEnery  
504.274.2664 direct  
[parke@mceneryco.com](mailto:parke@mceneryco.com)

Mi Mi Montagnet Bankston, CCIM  
504.236.2634 mobile  
[MiMi@M2Brokerage.com](mailto:MiMi@M2Brokerage.com)



## 2237 Poydras Street

Location and Physical Description

[www.M2Brokerage.com](http://www.M2Brokerage.com)

| [www.mceneryco.com](http://www.mceneryco.com)



Address:	2237 Poydras Street, New Orleans, Louisiana 70119
Total Site Area:	Approximately 46,000 SF site (over an acre of land) - with additional land available, including a fully improved parking lot directly across Perdido Street with an additional 52 parking spaces, and a covered walk-way. <b>Property owner owns all adjacent property.</b> <u>Exact site size to be determined by eventual re-subdivision agreed to by Seller and Buyer.</u>
Gross Building Area:	~16,516 SF - NOT including the significant corridors leading to six (6) 53' expandable, mobile & self-contained surgical theatres, which are scheduled for sale and removal.
Zoning:	MU-2, High Intensity Mixed Use District (wide array of commercial uses)
Parking:	<u>The facility has access to parking in 5 lots designated on the attached plan as Lot 1, 2 3, 4 and 5 for a total of potentially 100 plus parking spaces.</u> Lot 1 is the lot directly behind the main facility. (8 spaces). Lot 2 contains 19 parking spaces included with the offering with entrance from Poydras Street. Lot 3 is 19 parking spaces available for lease with entrance from Perdido Street. Lot 4 is 52 parking spaces available for lease with entrance from Perdido Street directly across the street from the rear covered pedestrian walkway. Lot 5 is 633-37 Rocheblave Street, an unimproved lot measuring approximately 60' x 172", which could provide about 26 additional parking spaces.
Comments:	2237 Poydras was most recently occupied by the United States Department of Veterans Affairs, Southeast Louisiana Veterans Health Care System Ambulatory Procedure Unit. The VA spent approximately \$10 million improving the property to accommodate this most recent use, and the facility is uniquely well suited to accommodate future intensive medical procedures. The facility most recently housed 110 employees.  <u>The facility is serviced by a Cummins 750 kW diesel generator.</u>



M2 BROKERAGE  
& THE MCENERY COMPANY





2237 Poydras Street

Location Offering Details

[www.M2Brokerage.com](http://www.M2Brokerage.com)

| [www.mceneryco.com](http://www.mceneryco.com)

**Lease Price per SF:** \$25.00 per SF on NNN terms - Minimum 5 year lease term

**List Price for Sale:** Contact Listing Brokers for official marketing price for sale.

**Showing Protocol:** All qualified prospects may contact Parke McEnery at 504.236.9542 or Mi Mi Montagnet 504.236.2634 to schedule a private tour of the facility.



M2 BROKERAGE  
& THE MCENERY COMPANY



The information contained herein has been obtained from sources that we deem reliable. No representation or warranty is made as to the accuracy thereof, and it is submitted subject to errors, omissions, change of price, or other conditions, or withdrawal without notice. Licensed in Louisiana



2237 Poydras Street

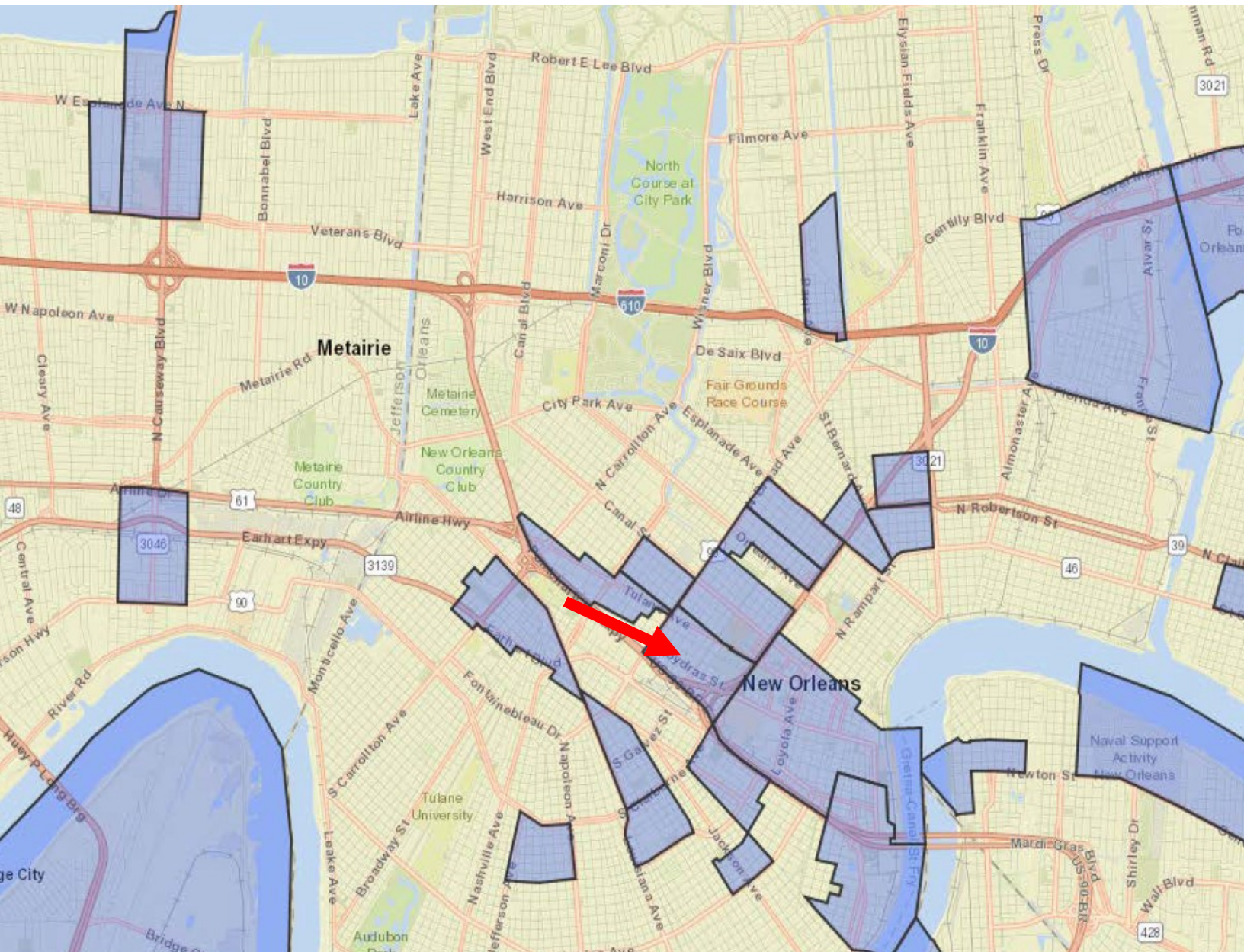
Opportunity Zone Details

[www.M2Brokerage.com](http://www.M2Brokerage.com)

[www.mceneryco.com](http://www.mceneryco.com)

2237 Poydras is located within the Opportunity Zone. This is hugely impactful in a prospective purchase of the property. Buyers should consult with an accountant to gain all related knowledge of the benefits associated with this exciting development for 2237 Poydras Street.

**Opportunity Zone IRS Link:** <https://www.irs.gov/newsroom/opportunity-zones-frequently-asked-questions>



**M2 BROKERAGE  
& THE MCENERY COMPANY**



The information contained herein has been obtained from sources that we deem reliable. No representation or warranty is made as to the accuracy thereof, and it is submitted subject to errors, omissions, change of price, or other conditions, or withdrawal without notice. Licensed in Louisiana



## 2237 Poydras Street

### Facility History

[www.M2Brokerage.com](http://www.M2Brokerage.com) | [www.mceneryco.com](http://www.mceneryco.com)

The Southeast Louisiana Veterans Health Care System (SLVHCS) opened its Ambulatory Procedure Unit (the “APU”) in May 2011 at 2237 Poydras Street, at the time, restoring the VA’s ability to perform in-house, same-day surgery services for the first time since Hurricane Katrina. The 2237 Poydras Street location also housed several non-APU services such as the pain and gastrointestinal clinics, as well as a complete audiology clinic.

The APU housed three operating rooms, two invasive procedure units (with a total of four procedure rooms) and one recovery room with six beds. At the APU, the VA was able to offer surgical procedures performed in under 90 minutes, requiring no blood transfusions and in less than a 24-hour stay.

The facility is serviced by emergency back up generator systems capable of providing electrical and mechanical needs to the entire facility. Most recently, there were 110 employees working at the site, including laboratory, surgery, pharmacy, house-keeping and police personnel. The facility was vacated by the SLVHCS in October 2017 as they completed their move to the new VA Medical Center.



**M2 BROKERAGE  
& THE MCENERY COMPANY**



The information contained herein has been obtained from sources that we deem reliable. No representation or warranty is made as to the accuracy thereof, and it is submitted subject to errors, omissions, change of price, or other conditions, or withdrawal without notice. Licensed in Louisiana



2237 Poydras Street

Facility Specs

[www.M2Brokerage.com](http://www.M2Brokerage.com)

| [www.mceneryco.com](http://www.mceneryco.com)



### 2237 Poydras Street Facility Specs:

#### General Building Specs

- Three (3) Steris Small Steam Sterilizers  
Equipment tags #0311110-11, 0309510-07, 0309510
- One (1) Cummins Power Generator (750 rated KW)  
Model: DQFAA Serial: A110185086
- Fire Protection: The building is fully sprinkled.

### 2237 Poydras Street Facility Specs:

#### General Building Specs

- 6 Exam Rooms and 2 Procedure Rooms
- Electrical Service: 208Y/120V 3 phase, 4 wire with EPS (Emergency Power System)
- Metal Lockers in Lounge
- Pharmacy with concrete vault
- Nurse's station w/ Tri-Tech Medical Inc. gas & generator monitoring panels
- Clinic Rooms, supervision of prep and holding areas
- Ambulatory Surgery / Prep Holding - Patient prep for patients
- 16 total bathrooms
- Break Room/Lounge
- Clinical Laboratory - Formerly for chemistry/hematology/microbiology
- Audiology/Speech Clinic

#### Security Related Specs (7 system alarm—smart phone technology)

- 21 Exterior door contacts
- 7 12V 4AH back up batteries
- 7 16v transformers
- 7 indoor sirens
- 3 8 zone expander modules
- 22 motion detectors
- Interior and Exterior cameras
- Interconnection between 7 existing DSC intrusion systems
- One main control panel
- 1 16 channel DVR (monitoring and controlling existing cameras)
- Cellular monitoring system
- Internet ability monitoring



M2 BROKERAGE  
& THE MCENERY COMPANY



The information contained herein has been obtained from sources that we deem reliable. No representation or warranty is made as to the accuracy thereof, and it is submitted subject to errors, omissions, change of price, or other conditions, or withdrawal without notice. Licensed in Louisiana



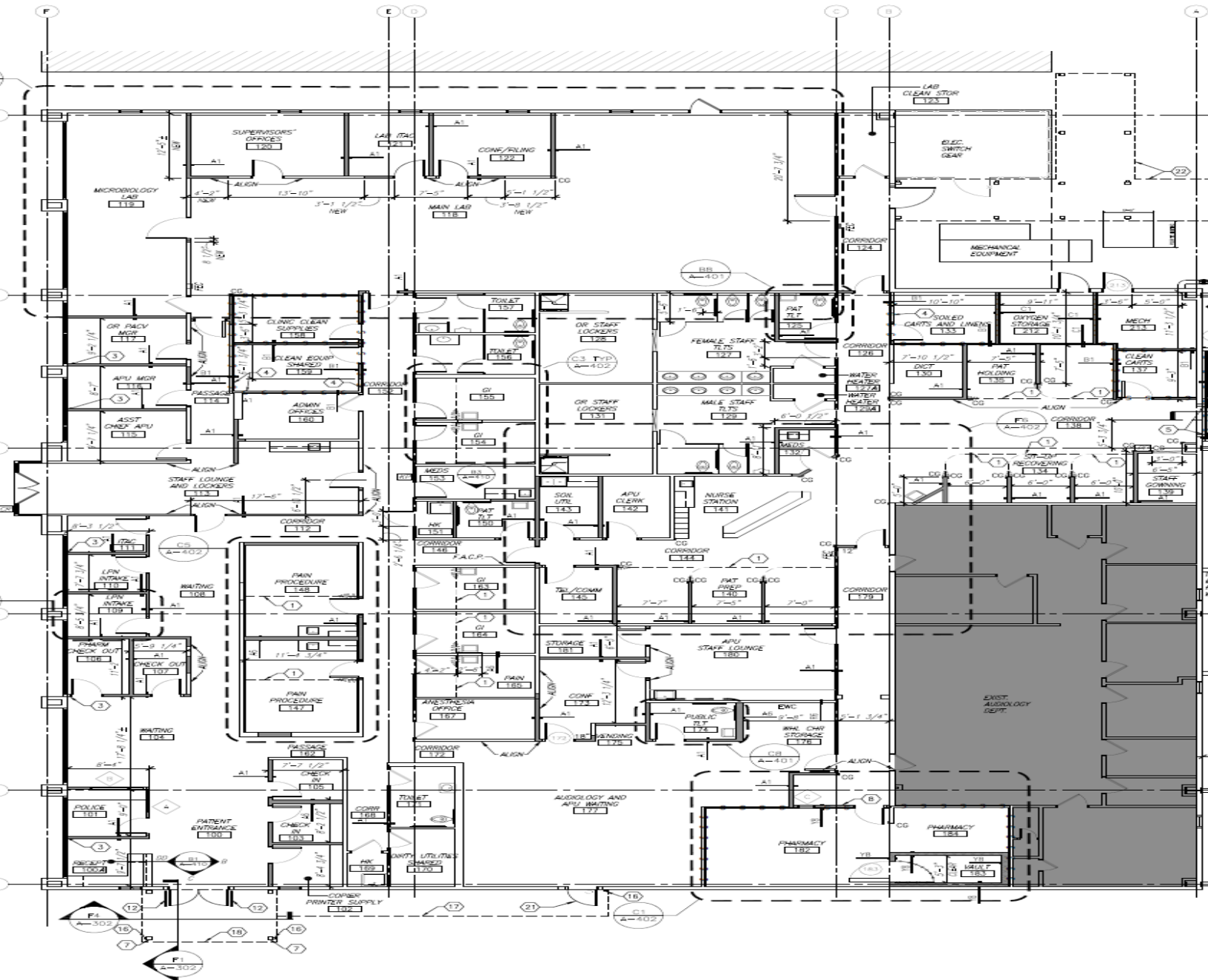
2237 Poydras Street

Floor Plan

[www.M2Brokerage.com](http://www.M2Brokerage.com)

[www.mceneryco.com](http://www.mceneryco.com)

Full Set of Plans Available Upon Request



Est. 1980

M2 BROKERAGE  
& THE MCENERY COMPANY



M2 BROKERAGE  
NEW ORLEANS

The information contained herein has been obtained from sources that we deem reliable. No representation or warranty is made as to the accuracy thereof, and it is submitted subject to errors, omissions, change of price, or other conditions, or withdrawal without notice. Licensed in Louisiana



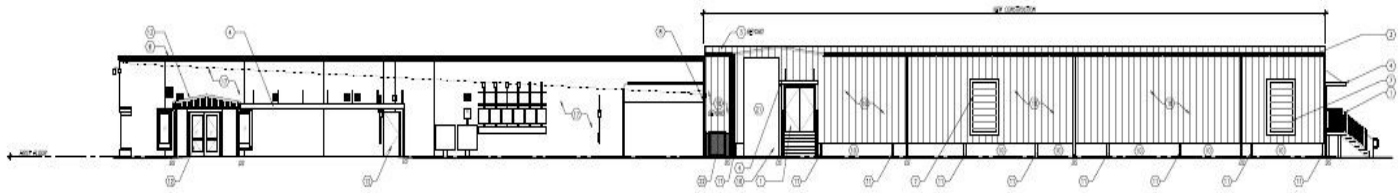
2237 Poydras Street

Elevation Renderings

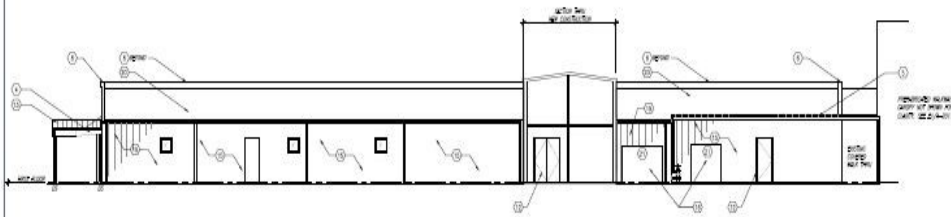
www.M2Brokerage.com

www.mceneryco.com

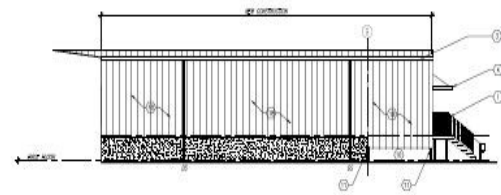
Full Set of Plans Available Upon Request



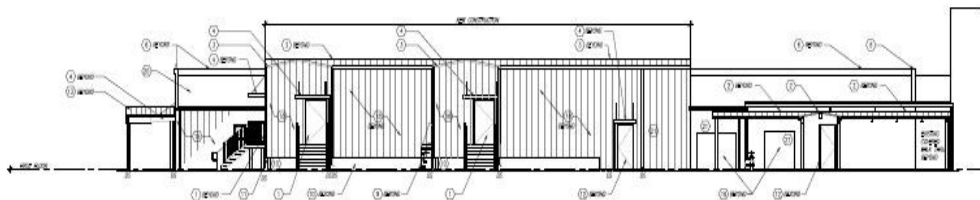
01 SOUTH ELEVATION



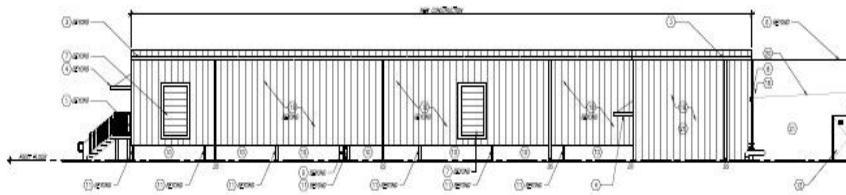
02 EAST ELEVATIONS & BUILDING SECTION



03 HIDDEN ELEVATION



04 EAST ELEVATION



05 NORTH ELEVATION

ELEVATION KEY NOTES

1. EXTERIOR WALL FINISH
2. EXTERIOR WALL FINISH
3. EXTERIOR WALL FINISH
4. EXTERIOR WALL FINISH
5. EXTERIOR WALL FINISH
6. EXTERIOR WALL FINISH
7. EXTERIOR WALL FINISH
8. EXTERIOR WALL FINISH
9. EXTERIOR WALL FINISH
10. EXTERIOR WALL FINISH
11. EXTERIOR WALL FINISH
12. EXTERIOR WALL FINISH
13. EXTERIOR WALL FINISH
14. EXTERIOR WALL FINISH
15. EXTERIOR WALL FINISH
16. EXTERIOR WALL FINISH
17. EXTERIOR WALL FINISH
18. EXTERIOR WALL FINISH
19. EXTERIOR WALL FINISH
20. EXTERIOR WALL FINISH
21. EXTERIOR WALL FINISH
22. EXTERIOR WALL FINISH
23. EXTERIOR WALL FINISH
24. EXTERIOR WALL FINISH
25. EXTERIOR WALL FINISH
26. EXTERIOR WALL FINISH
27. EXTERIOR WALL FINISH
28. EXTERIOR WALL FINISH
29. EXTERIOR WALL FINISH
30. EXTERIOR WALL FINISH
31. EXTERIOR WALL FINISH
32. EXTERIOR WALL FINISH
33. EXTERIOR WALL FINISH
34. EXTERIOR WALL FINISH
35. EXTERIOR WALL FINISH
36. EXTERIOR WALL FINISH
37. EXTERIOR WALL FINISH
38. EXTERIOR WALL FINISH
39. EXTERIOR WALL FINISH
40. EXTERIOR WALL FINISH
41. EXTERIOR WALL FINISH
42. EXTERIOR WALL FINISH
43. EXTERIOR WALL FINISH
44. EXTERIOR WALL FINISH
45. EXTERIOR WALL FINISH
46. EXTERIOR WALL FINISH
47. EXTERIOR WALL FINISH
48. EXTERIOR WALL FINISH
49. EXTERIOR WALL FINISH
50. EXTERIOR WALL FINISH
51. EXTERIOR WALL FINISH
52. EXTERIOR WALL FINISH
53. EXTERIOR WALL FINISH
54. EXTERIOR WALL FINISH
55. EXTERIOR WALL FINISH
56. EXTERIOR WALL FINISH
57. EXTERIOR WALL FINISH
58. EXTERIOR WALL FINISH
59. EXTERIOR WALL FINISH
60. EXTERIOR WALL FINISH
61. EXTERIOR WALL FINISH
62. EXTERIOR WALL FINISH
63. EXTERIOR WALL FINISH
64. EXTERIOR WALL FINISH
65. EXTERIOR WALL FINISH
66. EXTERIOR WALL FINISH
67. EXTERIOR WALL FINISH
68. EXTERIOR WALL FINISH
69. EXTERIOR WALL FINISH
70. EXTERIOR WALL FINISH
71. EXTERIOR WALL FINISH
72. EXTERIOR WALL FINISH
73. EXTERIOR WALL FINISH
74. EXTERIOR WALL FINISH
75. EXTERIOR WALL FINISH
76. EXTERIOR WALL FINISH
77. EXTERIOR WALL FINISH
78. EXTERIOR WALL FINISH
79. EXTERIOR WALL FINISH
80. EXTERIOR WALL FINISH
81. EXTERIOR WALL FINISH
82. EXTERIOR WALL FINISH
83. EXTERIOR WALL FINISH
84. EXTERIOR WALL FINISH
85. EXTERIOR WALL FINISH
86. EXTERIOR WALL FINISH
87. EXTERIOR WALL FINISH
88. EXTERIOR WALL FINISH
89. EXTERIOR WALL FINISH
90. EXTERIOR WALL FINISH
91. EXTERIOR WALL FINISH
92. EXTERIOR WALL FINISH
93. EXTERIOR WALL FINISH
94. EXTERIOR WALL FINISH
95. EXTERIOR WALL FINISH
96. EXTERIOR WALL FINISH
97. EXTERIOR WALL FINISH
98. EXTERIOR WALL FINISH
99. EXTERIOR WALL FINISH
100. EXTERIOR WALL FINISH



woodward design + build  
P.O. BOX 13447 NEW ORLEANS, LOUISIANA 70188  
504.888.6443 TEL. WOODWARDDESIGNBUILD.COM

Southeast Louisiana  
Veterans Healthcare System  
Ambulatory Procedure Unit  
1001 Poydras Street  
New Orleans, LA 70112

Job No.  
Revision  
Drawn by  
AS  
Checked by  
JY

and BUILDING JTS, LLC

ALERT CUSTOMER

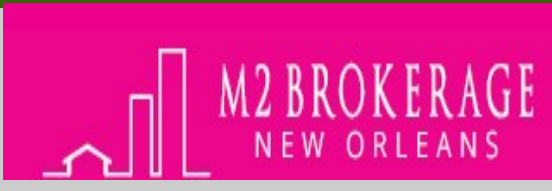
EXTERIOR ELEVATIONS

A201

ALL INFORMATION CONTAINED HEREIN IS THE PROPERTY OF M2 BROKERAGE AND THE MCENERY COMPANY. IT IS TO BE USED ONLY FOR THE PROJECT AND SITE SPECIFICALLY IDENTIFIED HEREIN. NO PART OF THIS DOCUMENT IS TO BE REPRODUCED OR TRANSMITTED IN ANY FORM OR BY ANY MEANS, ELECTRONIC OR MECHANICAL, INCLUDING PHOTOCOPYING, RECORDING, OR BY ANY INFORMATION STORAGE AND RETRIEVAL SYSTEM, WITHOUT PERMISSION IN WRITING FROM M2 BROKERAGE AND THE MCENERY COMPANY.



M2 BROKERAGE  
& THE MCENERY COMPANY



The information contained herein has been obtained from sources that we deem reliable. No representation or warranty is made as to the accuracy thereof, and it is submitted subject to errors, omissions, change of price, or other conditions, or withdrawal without notice. Licensed in Louisiana



2237 Poydras Street

Interior Photos

[www.M2Brokerage.com](http://www.M2Brokerage.com)

| [www.mceneryco.com](http://www.mceneryco.com)



M2 BROKERAGE  
& THE MCENERY COMPANY



The information contained herein has been obtained from sources that we deem reliable. No representation or warranty is made as to the accuracy thereof, and it is submitted subject to errors, omissions, change of price, or other conditions, or withdrawal without notice. Licensed in Louisiana



2237 Poydras Street

Interior Photos

[www.M2Brokerage.com](http://www.M2Brokerage.com)

| [www.mceneryco.com](http://www.mceneryco.com)



M2 BROKERAGE  
& THE MCENERY COMPANY



The information contained herein has been obtained from sources that we deem reliable. No representation or warranty is made as to the accuracy thereof, and it is submitted subject to errors, omissions, change of price, or other conditions, or withdrawal without notice. Licensed in Louisiana



2237 Poydras Street

Additional Exterior Photos

[www.M2Brokerage.com](http://www.M2Brokerage.com)

| [www.mceneryco.com](http://www.mceneryco.com)



M2 BROKERAGE  
& THE MCENERY COMPANY



The information contained herein has been obtained from sources that we deem reliable. No representation or warranty is made as to the accuracy thereof, and it is submitted subject to errors, omissions, change of price, or other conditions, or withdrawal without notice. Licensed in Louisiana



2237 Poydras Street

Additional Exterior Photos

[www.M2Brokerage.com](http://www.M2Brokerage.com)

| [www.mceneryco.com](http://www.mceneryco.com)



M2 BROKERAGE  
& THE MCENERY COMPANY

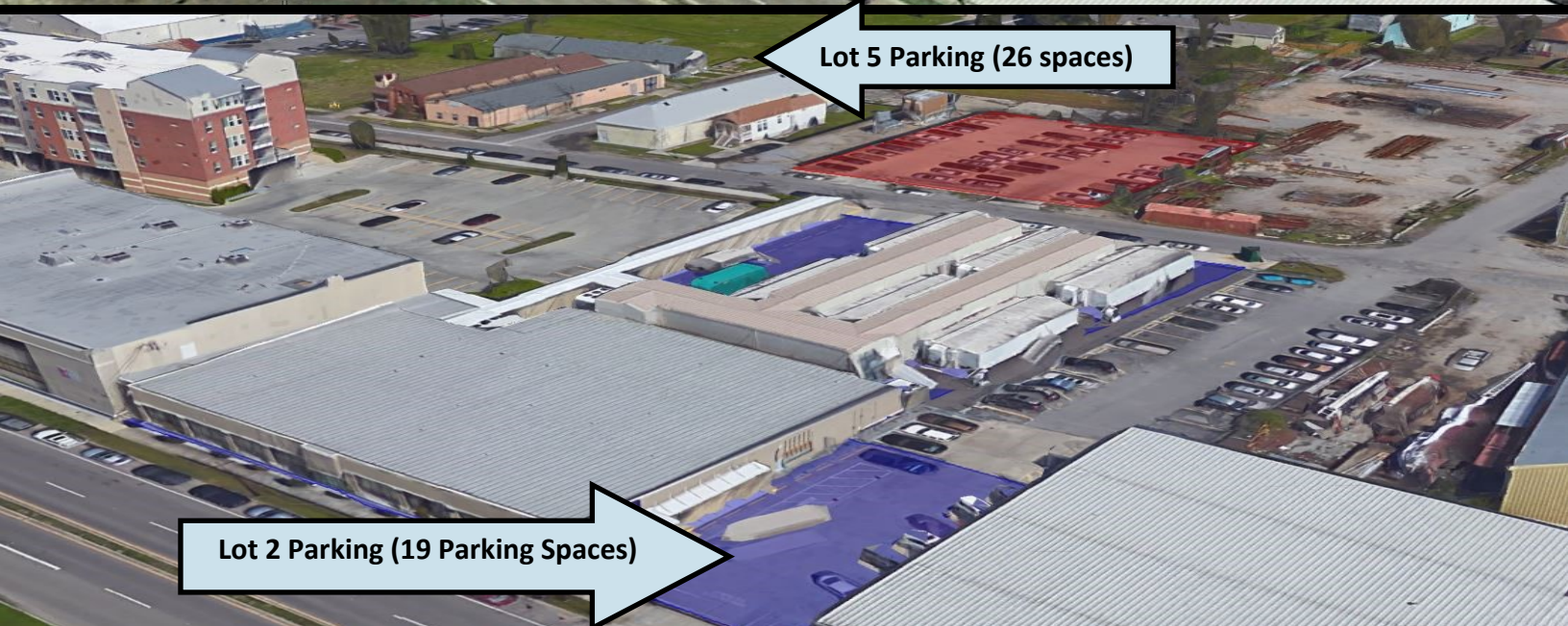
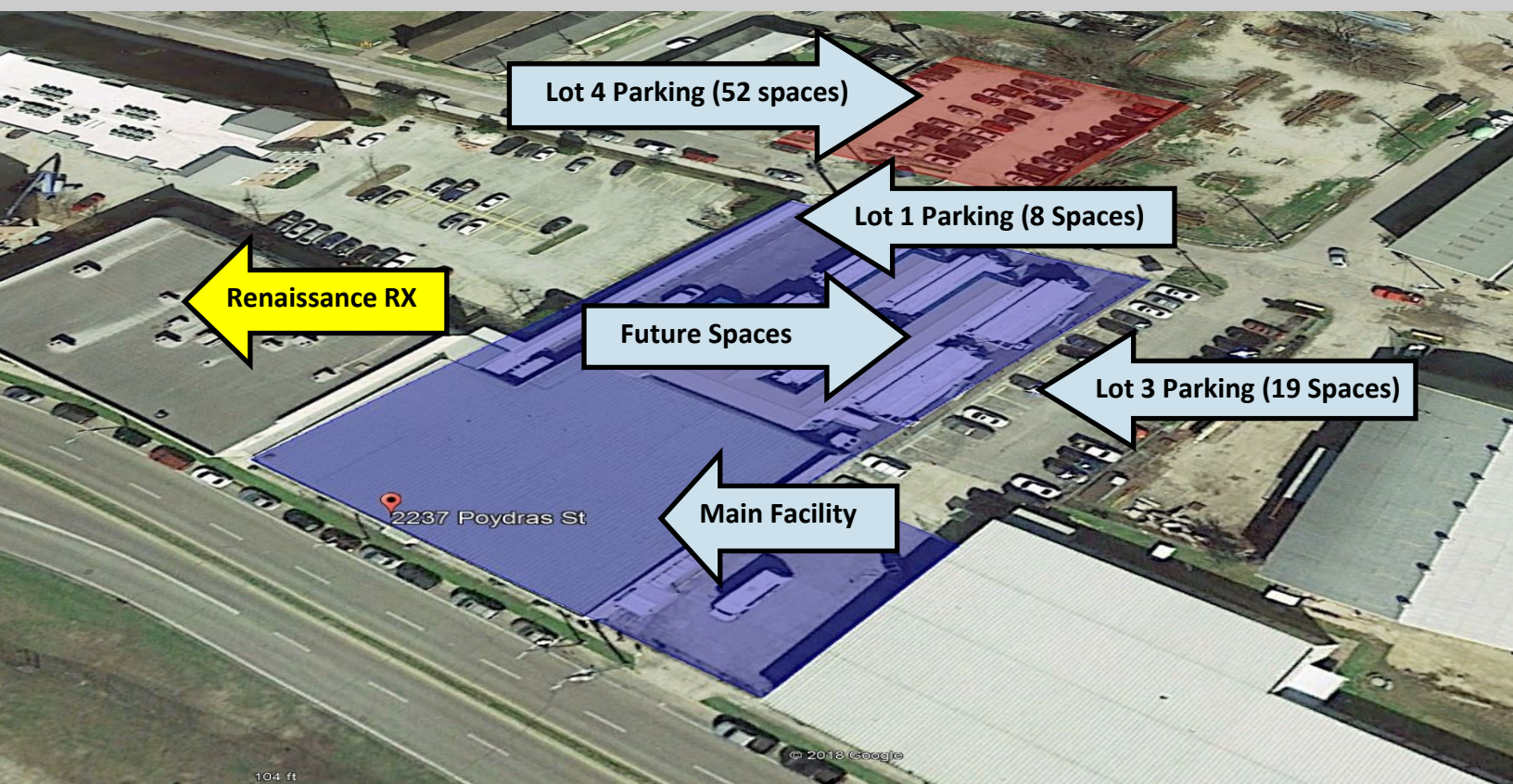


The information contained herein has been obtained from sources that we deem reliable. No representation or warranty is made as to the accuracy thereof, and it is submitted subject to errors, omissions, change of price, or other conditions, or withdrawal without notice. Licensed in Louisiana



## 2237 Poydras Street

Aerial View and Property Outline (Site Boundaries are Approximate)



M2 BROKERAGE  
& THE MCENERY COMPANY



The information contained herein has been obtained from sources that we deem reliable. No representation or warranty is made as to the accuracy thereof, and it is submitted subject to errors, omissions, change of price, or other conditions, or withdrawal without notice. Licensed in Louisiana



2237 Poydras Street

Aerial Views (Drone Imagery)



M2 BROKERAGE  
& THE MCENERY COMPANY



The information contained herein has been obtained from sources that we deem reliable. No representation or warranty is made as to the accuracy thereof, and it is submitted subject to errors, omissions, change of price, or other conditions, or withdrawal without notice. Licensed in Louisiana



2237 Poydras Street

Aerial Views (Drone Imagery)



M2 BROKERAGE  
& THE MCENERY COMPANY



The information contained herein has been obtained from sources that we deem reliable. No representation or warranty is made as to the accuracy thereof, and it is submitted subject to errors, omissions, change of price, or other conditions, or withdrawal without notice. Licensed in Louisiana



2237 Poydras Street  
"THE ADDITIONAL PARKING"

Owner of Additional Parking Lot is a Licensed Real Estate Broker in Louisiana



M2 BROKERAGE  
& THE MCENERY COMPANY



The information contained herein has been obtained from sources that we deem reliable. No representation or warranty is made as to the accuracy thereof, and it is submitted subject to errors, omissions, change of price, or other conditions, or withdrawal without notice. Licensed in Louisiana



# 2237 Poydras Street

General Neighborhood Overview—Surrounding Land Use Map



M2 BROKERAGE  
& THE MCENERY COMPANY



The information contained herein has been obtained from sources that we deem reliable. No representation or warranty is made as to the accuracy thereof, and it is submitted subject to errors, omissions, change of price, or other conditions, or withdrawal without notice. Licensed in Louisiana



# Bio-Medical District & Mid-City

Neighborhood / Market Area



## Bio-District & Mid-City

<b>Neighborhood:</b>	Mid-City New Orleans
<b>Status:</b>	Ongoing re-development
<b>Parish:</b>	Orleans
<b>Population Status:</b>	Continued significant growth

The immediate neighborhood is one of the most active areas of new development within New Orleans – including the \$1.5 Billion UMC /VA Hospital which anchors the new Bio Medical District. The immediate neighborhood is also immediately accessible to the LSU Health Center, the Dental School, major medical resident dormitory uses, and Tulane Medical Center. 2237 Poydras Street is located directly on Poydras Street with immediate and very convenient access to both Downtown New Orleans and all relevant medical nodes in the immediate neighborhood. The site is also proximate to the new and exciting Lafitte Greenway, and countless other significant land uses in the Mid-City area.



M2 BROKERAGE  
& THE MCENERY COMPANY



The information contained herein has been obtained from sources that we deem reliable. No representation or warranty is made as to the accuracy thereof, and it is submitted subject to errors, omissions, change of price, or other conditions, or withdrawal without notice. Licensed in Louisiana